

# DA NANG MIKAZUKI FAMILY & FRIENDS



**TRAVEL PERIOD: 9 APR TO 31 DEC 2025**

Blackout Dates: 20-25 Dec 2025 inclusive

## PACKAGE INCLUDES:

- Round-trip Economy Class air ticket between Hong Kong and Da Nang with Hong Kong Airlines
- 3 nights of hotel accommodation at **Da Nang Mikazuki Japanese Resort & Spa** with daily breakfast
- Round-trip private airport transfer in Da Nang

## ADDED BENEFITS:

### FUN

- Unlimited access to indoor and outdoor Water Park 365, Ninja Kids' Park\*

### RELAXING

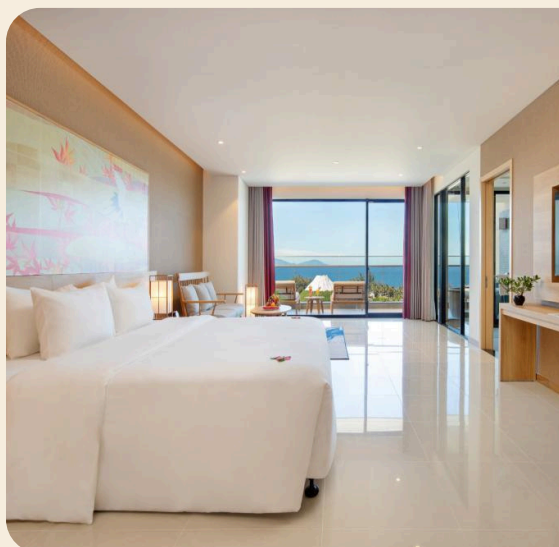
- Enjoy Onsen Hot Mineral Bath, Dry Sauna & Himalayan Salt Sauna experiences\*

### REFRESHING

- Complimentary minibar replenished daily with bottled water, soft drinks and beer



## PACKAGE PRICE PER PERSON:



ROOM TYPE	Share Twin	Per Person
Deluxe Ocean View	2 Adults	HK\$3,680
Family Ocean View 1 King + 1 Twin	4 Adults	HK\$2,980

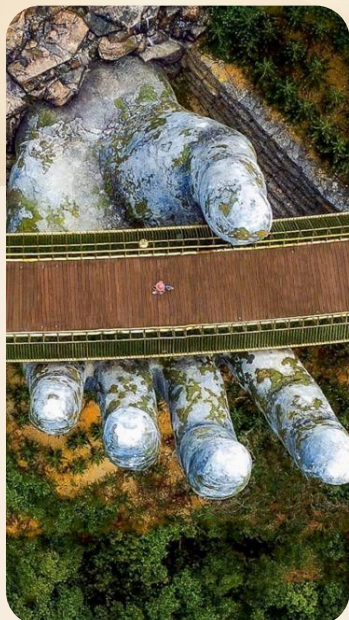
## PEAK SEASON SURCHARGE PER ROOM PER NIGHT:

DATE	Deluxe Ocean View	Family Ocean View
1 May & 1-30 Dec	HK\$330	HK\$520
(Sun-Thu) 1 Jun - 31 Aug		
(Fri & Sat) 1 Jun - 31 Aug	HK\$410	HK\$640
31 Dec	HK\$650	HK\$990

### Room Upgrade Surcharge:

- HK\$260/room/night for Deluxe Ocean View to Premium Deluxe Ocean View or Family Ocean View to Premium Family Ocean View





#### Terms & Conditions:

- Package price is per person based on double occupancy in Hong Kong Dollars and includes a round-trip Economy Class air ticket between Hong Kong and Da Nang with Hong Kong Airlines (Q class). A surcharge for travelling in higher airfare classes or during peak seasons will be applied.
- Package price EXCLUDES:
  - Airport Tax, Security Fee and Fuel Surcharge
  - Visa Fee
  - Travel Insurance
  - Any personal expenses
- Blackout date: 20-25 Dec 2025 inclusive
- All special requests for hotels are subject to the hotel's final decision. Connexus Travel is not responsible for any guest-initiated cancellations or compensation claims based on unmet requests.
- Most countries require a passport valid for at least six (6) months on the date of return and a valid entry visa. Connexus Travel Limited are not liable for any consequences due to visa or passport issues.
- Travellers' full name as shown on the travel document is required when booking. Amendment will likely result in fare difference, loss of reservation and/or incurring amendment fees.
- Travellers accept full responsibility for all losses and expenses due to "Reasons beyond control". Connexus Travel Limited will not be liable for any consequences. ("Reasons beyond control" means hostilities, political unrest, natural disasters, pestilences, bad weather, technical problems to transport, changes to the frequency or timetable of any means of conveyance by its operator without advance notice, strikes, industrial action, etc.)
- Travellers are recommended to purchase suitable travel insurance to ensure comprehensive coverage during the trip.
- Package price includes a 0.15% TIA Levy.
- Full payment is required at the time of booking.
- A non-refundable fee of HK\$500 per person plus any applicable price difference applies for each change to existing bookings.
- Cancellation:
  - Low Season (9-29 Apr, 2-31 May and 1 Sep - 30 Nov 2025)
    - Over 7 days before departure: 10% of the total payment
    - Within 0-7 days before departure or no-show: 100% of the total payment
  - Shoulder Season (1 Jun - 31 Aug and 1-30 Dec 2025)
    - Over 14 days before departure: 10% of the total payment
    - Within 0-14 days before departure or no-show: 100% of the total payment
  - Peak Season (30 Apr - 1 May and 31 Dec 2025)
    - Over 21 days before departure: 10% of the total payment
    - Within 0-21 days before departure or no-show: 100% of the total payment
- All prices are subject to change without prior notice.
- Connexus Travel Limited reserves the final right to make decisions in case of any disputes.

Package Code: H2504DAD01